



Noveko International Inc.

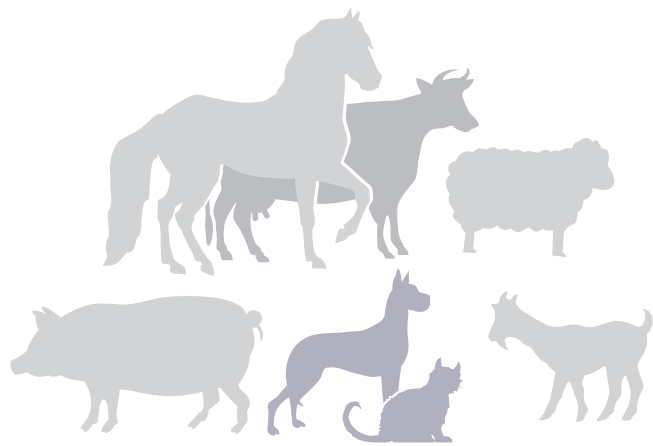
126, Boulevard de la République
F-16000 Angoulême
FRANCE

Tél. : + 33 (0)5 45 92 03 57

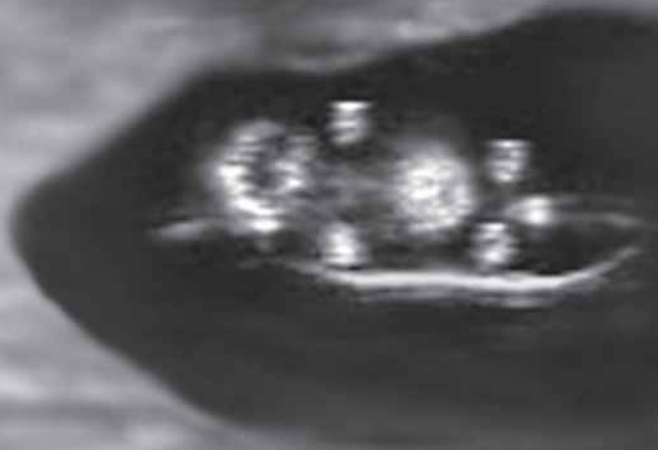
Fax : + 33 (0)5 45 92 46 72

E-mail : e-c-m@wanadoo.fr

www.agroscan.com



 **ECM**
Noveko International Inc.

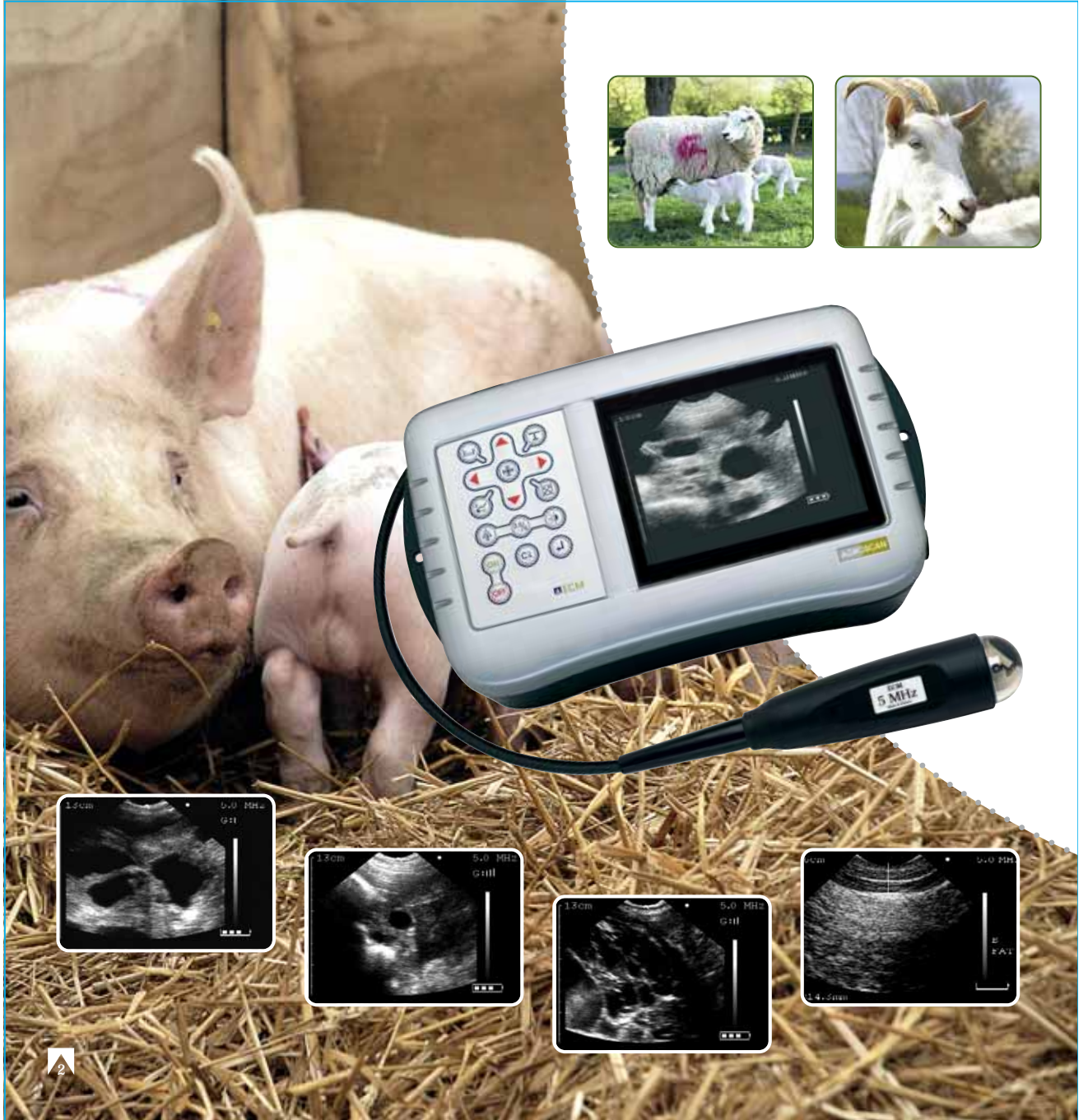


Echo control pioneered itself, in the early 1980's, as the first company to take advantage of the applications the ultrasound had on livestock. We rapidly became one of the principle middlemen between bovine, swine, goats, and sheep breeders while also arousing the interests of other practitioners (veterinarians, insemination centers, production partnerships) The first generations of ultrasounds were heavy, cumbersome, and had to be plugged in to power the machine. Wiser from our know how we developed the first portable ultrasound that operated with an internal battery called the Ultra Scan 900 in collaboration with a canadian company. We have successfully marketed all over Europe using a network of exclusive partners and distributors.

Come the year 2000, in Angouleme, we naturally conceived and produced our own line of portable ultrasounds branded AGROSCAN. Firstly dedicated to pregnancy diagnosis, the unit is perfectly capable of all the veterinary applications: diagnostic of the ovaries and tendons, fetus sexing, back fat measurements, fetus count, ... With current sales in over 60 countries, these ultrasounds have become the reference for large animal diagnostics.

Managing to stay as a top competitor, we are consistently investing in our research and development department to produce new ultrasounds that respond to the needs in scanning your livestock. Our customers enjoy the comfort of a formal training period for operators and the full support of our after sales service through your local distributor.

Our reputation merits your confidence.



AGROSCAN

A16

The ultrasound scanner multi-manners:
Control of gestation and automatic measure of back fat

AGROSCAN A16 offers you unbeatable comfort in work for great efficiency.

■ **Fast and reliable diagnostics from the 18th day due to a high-resolution image**

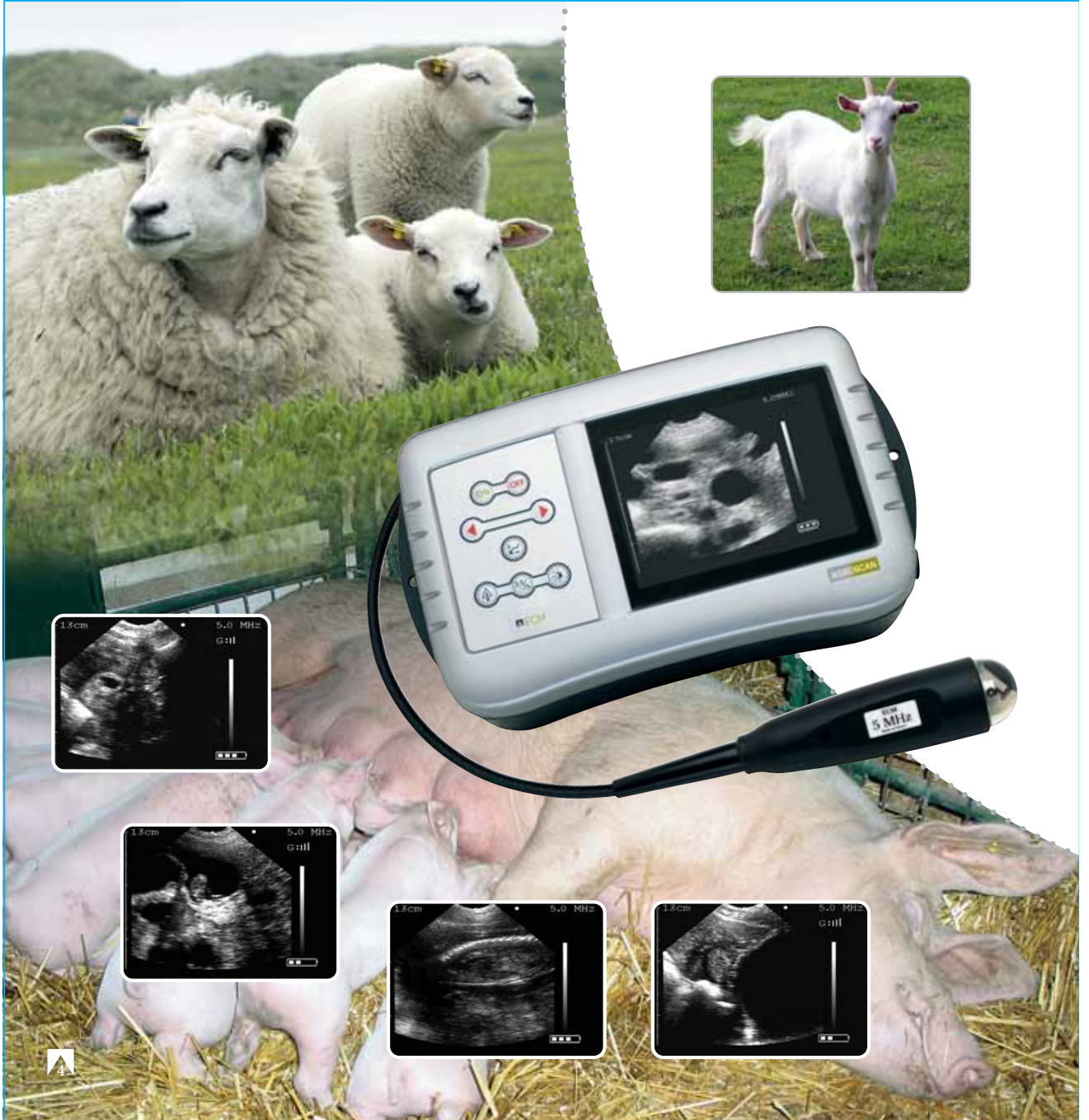
■ **Automatic back fat measurement**

- Exceptional imaging quality
- Compact with built-in battery
- 3 h 30 hours battery autonomy
- Ergonomic form
- Portability by a shoulder belt giving you total freedom of movements



TECHNICAL SPECIFICATIONS

- Weight: 1,5 kg
- Dimensions: 14 x 23 x 9 cm (5,49" x 9,03" x 3,54")
- Dual frequency probe 3,5/5 MHz
- Sector scanning of 90°
- Screen: 5"
- 256 tones of grey
- Luminosity modulation
- Gain control
- 3 exploration levels
- Freeze and measurement



AGROSCAN

A8

The ultrasound scanner that makes you a specialist

AGROSCAN A8 was elected best portable ultrasound scanner in its class.

■ **Fast and reliable diagnostics from the 18th day due to a high-resolution image**

- Exceptional imaging quality
- Compact with built-in battery
- 3 h 30 battery autonomy
- Ergonomic form
- Portability by a shoulder belt giving you total freedom of movements



TECHNICAL SPECIFICATIONS

- Weight: 1,5 kg
- Dimensions: 14 x 23 x 9 cm
(5,49" x 9,03" x 3,54")
- Dual-frequency probe 3,5/5 MHz
- Sector scanning of 90°
- Screen: 5"
- 256 tones of grey
- Luminosity modulation
- Gain control
- 3 exploration levels



AGROSCAN

A7

The scanner everyone can afford

AGROSCAN A7 is an ultrasound scanner classified for the control of gestation of sows.

■ **Fast and reliable diagnostics from the 18th day thanks to a high-resolution image**

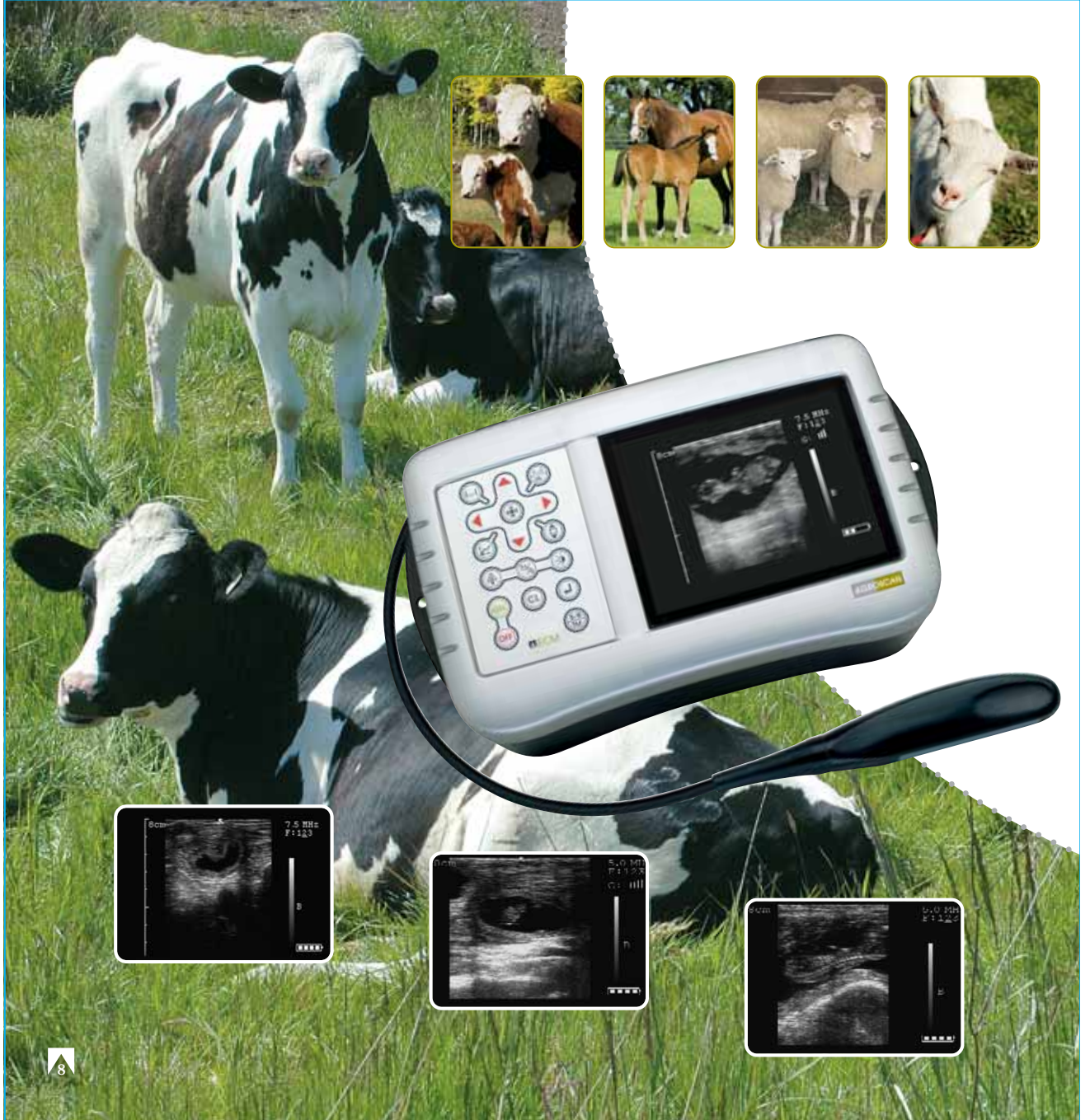
- Exceptional imaging quality
- Compact with built-in battery
- 1 h 30 battery autonomy
- Ergonomic form
- Portability by a shoulder belt giving you total freedom of movements



TECHNICAL SPECIFICATIONS

- Weight: 1,5 kg
- Dimensions: 14 x 23 x 9 cm
(5,49" x 9,03" x 3,54")
- 5 MHz sector probe
- Sector scanning of 90°
- Screen: 5"
- 256 tones of grey
- Luminosity modulation
- Gain control
- 2 exploration levels





AGROSCAN

AL

The linearly perfect scanner

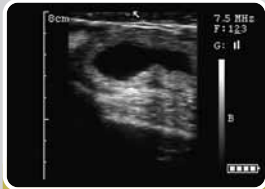
Thanks to 5 different linear and sector probes, the AGROSCAN L can perform all veterinarian applications and even more.

- Fast and reliable diagnosis from 28th day on cows, 13th on mares, 35th on sheeps and goats (pregnancy control, ovarian examinations, post partum diagnosis, ...)
- Foetal sexing on cows and mares
- Back fat measurements on cows and sheeps
- Teats' control, genital bull tract exams, ...
 - Exceptional imaging quality
 - Compact with built-in battery
 - 6 h 30 hours battery autonomy
 - Ergonomic form
 - Portability by a shoulder belt giving you total freedom of movements



TECHNICAL SPECIFICATIONS

- Weight: 1,850 kg
- Dimensions: 14 x 23 x 10,5 cm (9,03" x 5,49" x 4,12")
- Screen: 5,5"
- 256 tones of grey
- Luminosity modulation
- Gain control
- 3 exploration levels
- Focus: 3 zones of focusing
- Image freezing
- Measurement: distance, surface, circumference and automatic back fat, gestation tables
- Text function
- B - B/B - B/M mode
- Video output
- Memorisation of regulating
- Gestation tables



Pregnant cow 28 days



Pregnant cow 37 days



Pregnant cow 43 days



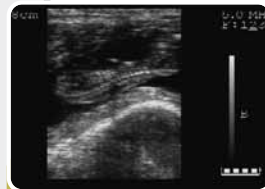
Pregnant cow 55 days



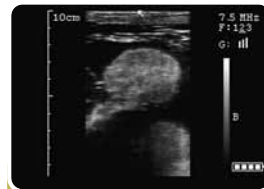
Male foetus 55 days



Female foetus 60 days



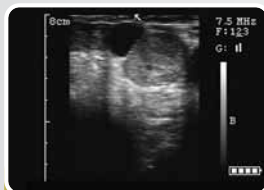
Pregnant cow 70 days



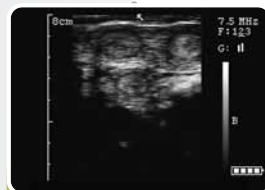
Pregnant cow 4 months - Colyledons



Corpus luteum with cavity



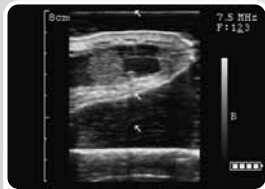
Corpus luteum + follicle



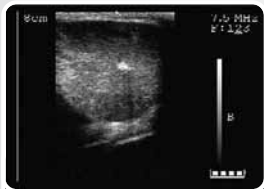
Empty cow



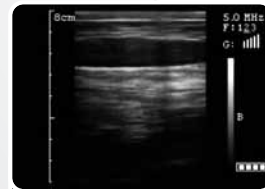
Metritis



Teat control



Bull tract



Back fat measurement

AGROSCAN

AL

Available probes



ALR 500

Electronic linear rectal probe of 5 MHz - 60 mm - (*Cows, mares*)



ALR 575

Electronic linear rectal probe of 5 / 7,5 MHz - 60 mm - (*Cows, mares*)



ALA 350

Electronic abdominal probe of 3,5 MHz - 80 mm - (*Ewes, goats, sows*)



AL 35L

Electronic linear abdominal probe of 3,5 MHz
130 mm - (*Back fat and muscles*)



ALS 355

Abdominal sector probe of 3,5 / 5MHz - (*Ewes, goats, sows*)





AGROSCAN

A14

The polyvalent multi-species ultrasound

AGROSCAN A14 is a light ultrasound scanner, compact, user friendly, especially designed for bovine scanning.

■ **Ideal to detect empty cows, ewes and goats, sows and confirm pregnant ones**

- Outstanding image quality
- Compact with built-in battery
- 3 h 30 battery autonomy
- Great comfort of use
- Portability by a shoulder belt giving you total freedom of movements



TECHNICAL SPECIFICATIONS

- Weight: 1,5 kg
- Dimensions: 14 x 23 x 9 cm
(5,49"x 9,03"x 3,54")
- Wideband rectal sector probe of 3,5/5 MHz
- 90° sector probe
- Screen: 5"
- 256 tones of grey
- Brightness settings
- Gain control
- Image freezing
- Distances calculations



Post processing

Should you be sent images captured using another IMAGYNE, you will be able to view them on your own IMAGYNE and modify all settings (gain, zoom, dynamic, edge enhancement...) to optimize the images on your screen to facilitate your diagnosis.

IMAGYNE

Externally small, with a pleasing form, internally very powerful with the features of high-level ultrasound scanners.

Powerful and easy to use, IMAGYNE offers exceptional image quality.

Designed using the latest technology, adapted to the veterinarian environment (PC based, post processing, CFM, PW, 4 D), and benefiting from a large range of wide band probes (convex, micro convex, linear, phased array and linear rectal probes), IMAGYNE fits with all veterinarian applications and allows for a reliable and fast diagnosis.

You will be surprised by the simplicity and intuitiveness of the user interface, which enables you to work with all IMAGYNE features in record time.

From its design, IMAGYNE is versatile and progressive. It is also as easy to upgrade new versions of software, as it is to intervene in after sales service.



TECHNICAL SPECIFICATIONS

1. System specifications

Display: 19" LCD adjustable
Resolution: 1024 x 1280
Keyboard: Backlit and height adjustable
Intuitive user interface
3 transducer ports, easily accessible
Dimensions: 66 cm x 75 cm x 130 cm
Weight: 56 kg
Printer shelf

2. Imaging modes

B
B/ M Mode
Color Flow Mapping: Velocity, Power
Pulsed Wave Doppler, Duplex
Triplex Mode
Trapezoidal Imaging
Tissue Harmonic Imaging
4D option
Acoustic Power Display
Zoom 16 levels
Adjustable Field of View
Post processing on cineloop and frozen image
Text, annotations
Measurements and tables

3. Storage & Connectivity

Hard drive storage 80 GB (clip, images)
CD/DVD writer
2 USB ports
RJ45 / Composite video / Foot switch
DICOM

4. Clinical Applications

Abdominal, Obstetrics, Gynecology,
Prostate, Superficial,
Vascular, Cardiac

SERVICES

ECM offers you to take your ultrasound scanner needs in hand. ECM has a team of specialists available to help you with the startup of your ultrasound scanner.

You will receive appropriate hands-on training, which will enable you to perfectly control all the functions and features of your unit.

ECM is experienced in maintenance, repair and scanner servicing. For this reason, we are able to ensure that the greatest care will be provided to your unit in order to guarantee its longevity and its effectiveness.

ECM ensures an effective after-sales service. Thus we guarantee the repair of your ultrasound scanner within 48 hours after its receipt in our workshop. Each country has its own after-sales service so that you have the same quality of local services.

All our technicians are trained and qualified, and intervene according to our criteria of:

- Speed
- Traceability
- Quality of the interventions
- Quality control before shipping back

ECM is committed to accompany you as much in the evolution of the functions, which can appear useful or necessary, progressing with the evolution of your needs, as well as in the progress of science and technology.

Your satisfaction makes our reputation.

